

HISTORY SIGNIFICANCE CHARACTER FAMILY
SPIRIT CHARACTER TRADITION CHARACTER CHARACTER SPIRIT
SPIRIT ACADEMICS TRADITION CHARACTER
CHARACTER SIGNIFICANCE SPIRIT SIGNIFICANCE



ST. MARY'S HALL DOANE ACADEMY



SINCE
1837



ACADEMICS SPIRIT HISTORY ACADEMICS
CHARACTER
FAMILY FAMILY TRADITION CHARACTER
SIGNIFICANCE ACADEMICS
SIGNIFICANCE SPIRIT TRADITION
TRADITION CHARACTER SIGNIFICANCE
CHARACTER ACADEMICS CHARACTER FAMILY CHARACTER
SPIRIT CHARACTER FAMILY HISTORY CHARACTER HISTORY
ACADEMICS TRADITION SIGNIFICANCE FAMILY



A SIGNIFICANT DIFFERENCE

Since its founding in 1837, St. Mary's Hall has been a school where students come to realize their interests and talents have value and that they are called to have a significant impact on the world around them.



We are proud of our school's place in history and the beautiful riverside campus developed many years ago by Bishop George Washington Doane. Imagine walking the same halls where Ulysses S. Grant visited during the Civil War, and where, to this day, stories still linger about the Underground Railroad and secret escape tunnels. But it's more than the historic buildings and tales of days gone by; it is a respect and appreciation for the 1200 living alumni from all over the world who stay involved and support the St. Mary's legacy.

FAMILY



Twelve separate school families, made up of students from all grade levels, meet regularly with faculty members who serve as school family advocates. Engaging dialogue and constructive projects contribute to a sense of individuality and community, transcending school life and, hopefully, impacting each student's home life as well.

The school family is a safe, caring and supportive environment where children are known and challenged to achieve their maximum potential. When children respect themselves, they are not afraid to connect with other people or to venture out into new and unknown territory. They also tend to be very comfortable with and encouraging of their peers. Competition is healthy and situations where other people are put down are very rare. Students work together and quickly come to realize they are dependent on one another for success. Our small school size promotes interaction among all classes and allows everyone the opportunity to help and to be helped, to advise and to be advised, to encourage and to be encouraged.

SPIRITUALITY



Ethics, spiritual maturity, character and leadership development are reinforced daily in chapel services and in the culture and climate of our classrooms and hallways. Scripture readings, prayers and songs in the Judeo-Christian tradition serve to inspire students and faculty of all faiths. Chapel is communal time to celebrate the successes of individuals and teams, to pray for members of the school community and to acknowledge that we need God and one another to achieve purpose and serenity in our lives.





ACADEMICS



CELEBRATION OF DIFFERENCES

Classroom discussions and hallway conversations are enriched by cultural, religious and socio-economic differences among the students, faculty and staff. How people think and feel is more important than how they look, where they come from or what they drive to school. We have a unique way of naturally absorbing and accepting all kinds of personalities and believe this is what makes St. Mary's an interesting place to learn and grow.

College Preparation – From the very first day of school, beginning in Pre K, students are taught that they are being prepared for success beyond their years at St. Mary's.



Pre K-6 – Lower School students master skills and acquire basic knowledge in English, math, science and social studies in traditional self-contained classrooms with their primary teacher. All students have classes each week with specialists in art, music, physical education, modern and classical language, computer science and library.

7-12 – Upper School students are required to complete a challenging liberal arts course of study and a demanding extra curricular program specifically designed to prepare them for college and to fully explore their unique talents and interests. 22 credits (5 ½ per year) are required as a minimum during the transcript years, grades 9-12. Upperclassmen have the opportunity to take calculus, physics, Level IV French, Spanish or Latin, advanced English composition and literature, social studies electives such as Civil War, psychology, law and economics, art and music electives, computer programming and AP level courses in every department.

As an integral part of the academic program each year, students in grades 3-12 engage in an interdisciplinary learning experience called Interim. Under the direction of a faculty member, students might do environmental research along the Jersey shore, tour the literary and historical landmarks in downtown Boston, or work in a soup kitchen to experience the consequences of poverty in our own backyard. Interim is not a break or vacation, but another chance for students and faculty to learn and grow together. So whether they're in the Lower or Upper School, children will find their studies interesting and engaging. A St. Mary's education encompasses a world of experiences through which students discover the very best within themselves and enhance their capacity to relate to the people and places around them.

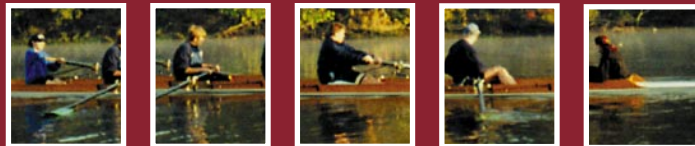


EXTRA CURRICULAR ACTIVITIES and ATHLETICS



Athletics and student activities play an integral role in the development of the students at St. Mary's. During any given season, 75% of our students in grades 5-12 participate in at least one seasonal sport. Those in grades 9-12 must participate in at least two interscholastic sports each year in order to fulfill their Upper School physical education requirement. Students are invited and encouraged to participate, lead and excel in a wide range of activities that stretch them beyond their previous experience. Recent extra curricular accomplishments have included a league championship for the Girls' Softball team and a second place finish for the Boys' Soccer team in the Penn Jersey Athletic Association, advancement to the County semi-finals by our Mock Trial team, participation in the Burlington County Teen Arts Festival, in both art and music, and advancement to the All-State Women's Chorus, just to mention a few.

www.thehall.org



Athletics	Clubs and Activities	
Middle School Soccer	Student Council	The Spartanian
Varsity Girls Soccer	Class Government	French Club
Varsity Boys Soccer	Doane Ambassadors	Drama Club
Girls and Boys Varsity Crew	Chapel Committee	Mock Trial
Boys and Girls Varsity Cross Country	Acolytes	Vision (Community Service Club)
Middle School Basketball	Song Leaders	Computer Help Desk
Varsity Girls Basketball	Choir	Gardening Club
Varsity Boys Basketball	Yearbook	Student Life Committee
Varsity Softball	Band	
Varsity Baseball	Website Technicians	
Boys and Girls Varsity Golf		

PREPARED FOR LIFE

St. Mary's Hall-Doane Academy provides an environment that balances structure and security with challenge and freedom. Our graduates go on to college with strong test scores, character and leadership skills.



Small class sizes, a talented and dedicated faculty, college preparatory expectations and a respectful school climate provide all the opportunities for students to realize their full potential. In recognizing their significance, students come to like who they are, respect and appreciate those around them and understand they have an obligation to be of value. St. Mary's Hall will not only educate your children for college, but more importantly, prepare them for life.

DEPARTMENTAL REQUIREMENTS 7-12

English
Great Literature/Research Writing
British Literature
American Literature
Western Literature
Math Essentials or Pre-algebra
Pre-algebra or Algebra
Algebra or Geometry
Geometry or Algebra II
Algebra II or Trig/Pre Calculus
Natural/Life Science
Physical Science
Earth Science
Biology
Chemistry or Honors AP Chemistry
Physics or Science electives
World Cultures/Geography
Ancient History
Modern World History
U.S. History I/Government
Modern U.S. History/AP U.S. History
Wellness (PE/Health/Fitness)
Comparative Religion/Ethics
Modern and Classical Languages I (Spanish, French or Latin)
Modern and Classical Languages II (Spanish, French or Latin)
Modern and Classical Languages III (Spanish, French or Latin)
Music/Art Appreciation/Computer Essentials
Interscholastic or Life Sports (PE)

COURSE ELECTIVES 9-12

AP English Composition
AP English Literature
Creative writing
Short Story
Shakespeare
Poetry
The Essay
Calculus/AP Calculus
Physics
Anatomy and Physiology
Environmental Science
AP Biology
Zoology
Spanish IV
French IV
Latin IV
Civil War
Economics
Law
Psychology
Choir
Band
Painting
Drawing
Sculpture
AP Studio Art
Java/AP Computers
Visual Basics/PowerPoint
Computer Literacy
Interscholastic or Life Sports (PE)



DIRECTIONS

New Jersey Turnpike Exit 5: Burlington

Once off the Turnpike, go to the red light and turn left on to Route 541 North towards Burlington (follow the signs for the Burlington-Bristol Bridge). Proceed several miles on Route 541 North, which becomes High Street, to Route 130 South and turn left. Follow the signs to the Burlington-Bristol Bridge (413 W). Proceed along the right side of the bridge on Reed Street to the river—do not cross the bridge. Follow the road and it will become Riverbank at the bend. Make an immediate right turn into St. Mary's driveway and into the parking lot.

Route 130 North/South

Take Rt.130 North or South. When you get to the Burlington area, follow the signs to the Burlington-Bristol Bridge (413 W). Instead of going over the bridge, proceed on the street that runs along the right side of the bridge on Reed Street to the river. Go around the bend onto Riverbank and make an immediate right turn into St. Mary's driveway and into the parking lot.

St Mary's Hall · Doane Academy 350 Riverbank, Burlington, New Jersey 08016 www.thehall.org Telephone 609 386-3500 Fax 609 386-5878
A Special Thanks to the St. Mary's Hall Parents for Funding this Brochure

